

SAILING INSTRUCTIONS

Name of the event: [Lorient Bretagne Sud Mini]

Dates: [11 -12 of April]

Venue: [Lorient]

Grade: [5A]

Organising authority: [Lorient Grand Large]

1 RULES

The regatta will be governed by:

- 1.1 The rules as defined in *The Racing Rules of Sailing (RRS)* including *Appendix B*.
- 1.2 National prescriptions applying to foreign competitors will be joined in a special appendix "**Prescriptions**" if necessary.
- 1.3 Regulations of the FFVoile,
- 1.4 In case of translation of these sailing instructions, the French text will take precedence.
- 1.5 Offshore rules when they apply (OSR) when they can be applied, category 3
- 1.6 Class Mini rules 2015

2 NOTICES TO COMPETITORS

Notices to competitors will be posted on the official notice board located at the race headquarters 7 Rue Estienne d'Orves, 1st floor or just across from the harbour office in Pornichet.

3 CHANGES TO SAILING INSTRUCTIONS

Any change to the sailing instructions will be posted on the official notice board no later than 2h00 before the warning signal of the race concerned by the change(s), except that any change to the schedule of races will be posted by 20h00 on the day before it will take effect.

4 SIGNALS MADE ASHORE

- 4.1. Signals made ashore will be displayed on the flag mast, located **at the pontoon's entrance at the Submarine Base**.
- 4.2. When AP Flag is displayed ashore, the warning signal cannot be made less than 60 minutes after the lowering of AP Flag. This changes Race Signals.
- 4.3. When the Y flag is up, personal flotation device shall be worn accordingly to RRS 40. This changes preamble of Part 4.

5 SCHEDULE OF RACES

- 5.1. Races are scheduled as follows: Saturday April 11th at 1pm (see race area paragraph 7)
- 5.2. The scheduled time of the warning signal for the race is: 1pm
For windsurf, when an elimination series is organized, times for the heats shall be posted on the official notice board at least 30 minutes before the start of the first heat.
- 5.3. To alert boats that a race or sequence of races will begin soon, an orange flag will be displayed with one sound signal at least five minutes before a warning signal is made.

6 CLASS FLAGS

Class flags are defined as follows: Classe Mini pavilion

7 RACING AREAS

Appendix "Racing areas" shows the location of racing areas.

8 THE COURSES

- 8.1 Courses are described in **appendix "Courses"**, including approximate angles between legs, the order in which marks are to be passed and the side on which each mark is to be left, as well as the approximate length of the course.
- 8.2 No later than the warning signal, the race committee will display the course to be sailed, and if necessary, approximate compass bearing and length of the first leg of the course. The following signals will be used: numeric flags
- 8.3 **Long distance races:** No later than the warning signal, the race committee will display a "D" flag if the course includes an offset mark. He will display a green flag to signal that the mark is to be rounded on starboard. Absence of green flag means that the offset mark is to be rounded on port (this changes Race Signals).
- 8.4 If there is a shorter race course, gates or marks to round are specified in the appendix "Courses"
- 8.5 Maps to have onboard: SHOM references n° 7139, 7032, 7033, 7068.

9 MARKS

- 9.1 Starting marks, course and offset marks, change of course and finishing marks will be as follows:

Offset mark	Finishing mark
White « conseil général » buoy	Yellow cylindrical buoy



- 9.2 A race committee boat signalling a change of a leg of the course is a mark.

10 AREAS THAT ARE OBSTRUCTIONS

The areas designated as obstructions are described in the appendix "course"

11 THE START

- 11.1 The starting line will be between a staff of the race committee boat displaying an orange flag on starboard and the course side of the port-end starting mark.
- 11.2 **Boats waiting for their start:** Boats whose warning signal has not been made shall avoid the starting area during the starting sequence for other races.
- 11.3 A boat starting later than 10 minutes after her starting signal will be scored DNS.
- 11.4

Signal	Pavillon et signal sonore	Minutes avant le départ	Pavillons
Avertissement	Pavillon de série Un signal sonore	5	↑ PAVILLON DE SERIE
Préparatoire	Pavillons P, I, Z, Z et I, ou Noir Un signal sonore	4	↑ 
Une minute	Amené du pavillon préparatoire Un long signal sonore	1	↓ 
Départ	Amené du pavillon de série Un signal sonore	0	↓ PAVILLON DE SERIE

12 CHANGE OF THE NEXT LEG OF THE COURSE

- 12.1 To change the next leg of the course, the race committee will lay a new mark (or move the finishing line) and remove the original mark as soon as practicable. When in a subsequent change a new mark is replaced, it will be replaced by an original mark.
- 12.2 Except at a gate, boats shall pass between the race committee boat signalling the change of the next leg and the nearby mark, leaving the mark to the appropriate side. This changes RRS 28.

13 THE FINISH

- 13.1 The finishing line will be between the committee boat (with an orange flag on a mast and an orange flashlight) and a yellow cylindrical buoy (with a flashlight). The boat will be located at N47° 15' 400"; O2° 22' 200".

- 13.2 All competitors must announce themselves via VHF to the race committee at least 5 miles before the finish and when crossing the finish line. At night competitors will need to point a searchlight at their sail numbers.

14 PENALTY SYSTEM

- 14.1 For Classe Mini prototypes and series RSS 44.1 is changed so that the 2 turn penalty becomes a one turn penalty
- 14.2 Whenever the chapter 2 rules in the RSS don't apply and are replaced by part B section II of the ColReg, RSS 44.1 does not apply.
- 14.3 A breach of the RRS (except RRS of chapter 2, RRS 28 and 31) may, after a hearing, be sanctioned from 10% of registered boats to disqualification.
- 14.4 A breach of rule 28 may, after a hearing, be sanctioned by 25% of race time for each mark which was not rounded correctly.

15 TIME LIMITS AND TARGET TIMES

- 15.1 Boats which do not finish before Sunday April 12th at 4pm will be ranked as DNF. This changes RRS 35, A4 and A5.

16 PROTESTS AND REQUESTS FOR REDRESS

- 16.1 Protest forms are available at the jury secretariat located 1st floor 7 Rue Estienne d'Orves in Lorient and just across from the harbour office in Pornichet. Protests and requests for redress or reopening shall be delivered there within the protest time limit.
- 16.2 For each class, the protest time limit is 120 minutes after the last boat has finished the race.
- 16.3 Notices will be posted within 2 hours after the protest time limit to inform competitors of hearings in which they are parties or named as witnesses. Hearings will be held in the jury room, located just across from the harbour office in Pornichet, beginning at the time mentioned on official notice board.
- 16.4 Notices of protests by the race committee or jury will be posted to inform boats under RRS 61.1(b).
- 16.5 Breaches of instructions below will not be grounds for a protest by a boat. This changes RRS 60.1(a).
- Start: boats waiting for their start
 - Safety rules (except the bowsprit rule)
 - Advertising
 - Support boats
 - Trash disposal
 - Radio communication
 - Limitation of boats' hauls out
 - Diving equipment and under water protective covers
- 16.6 On the last scheduled day of racing, a request for redress or for reopening a hearing shall be delivered
- (a) Within the protest time limit if the requesting party was informed of the decision on the previous day
 - (b) No later than 30 minutes after the party requesting reopening was informed of the decision on that day or, for a request for redress, no later than 30 minutes after the decision has been posted..
- This changes RRS 66 and 62.2.

17 RANKING

- 17.1 1 race must be completed to validate the event.

17.2 There will be 2 rankings: 1 for prototypes and 1 for series

18 SAFETY REGULATIONS

18.1 It is mandatory to sign in before leaving and when arriving in Pornichet
It can be done at the Groupama building starting at 9am on Saturday April 11th (cell phones will be taken there as well)

If you don't respect this, you can be sanctioned, without a hearing, by 10% of registered boats (modification of rule RSS 63.1). The same thing will apply for the arrivals.

18.2 A boat that retires from a race shall notify the race committee as soon as possible

18.3 The race channel is #8

18.4 Bowsprit: it is authorized only for the spinnaker.

18.5 All boats will be called via VHF before the start to test the radios, you must reply when the race committee calls your boat number.

18.6 The security briefing is mandatory and will take place on Friday April 10th at 7pm.

19 REPLACEMENT OF COMPETITORS OR EQUIPMENT

19.1 Substitution of competitors will not be allowed without prior written approval of the race committee or jury.

19.2 Substitution of damaged or lost equipment will not be allowed unless authorized by the race committee. Requests for substitution shall be made to the committee at the first reasonable opportunity.

20 EQUIPMENT AND MEASUREMENT CHECKS

A boat or equipment may be inspected at any time for compliance with the class rules and sailing instructions. On the water, a boat can be instructed by a race committee measurer or equipment inspector to proceed immediately to a designated for inspection.

21 EVENT ADVERTISING

Boats shall display event advertising supplied by the organizing authority: the 2 pavilions (Lorient Agglomération and Région Bretagne)

22 OFFICIAL BOATS

Official boats will be marked as follows:

- Pink flag: photographs
- Navy blue flag: official boats
- Orange flag: Press

23 SUPPORT BOATS

23.1 Team leaders, coaches and other support personnel shall stay outside areas where boats are racing from the time of the preparatory signal for the first class to start until all boats have finished or the race committee signals a postponement, general recall or abandonment.

23.2 The FFVoile regulation governing the intervention of coaches will apply.

24 TRASH DISPOSAL

Boats shall not put trash in the water. It must be thrown away at the boat's arrival.

25 DIVING EQUIPMENT AND WATER PROTECTION

You must follow local rules (for harbours in particular)

26 HAUL OUT

Boats must not go out of the water during the preparation and the regatta unless it has been approved by the race committee beforehand.

27 RADIO COMMUNICATION

Except in case of emergency, a boat cannot receive or send any radio transmission that cannot be heard by all the other competitors. This also applies to cell phones.

28 PRIZES

They will be distributed as per the notice of race on Sunday April 12th at 6pm at the restaurant "La Petite Case" at the harbour in Pornichet.

29 DECISION TO RACE

The responsibility for a boat's decision to participate in a race or to continue racing is hers alone. Consequently, accepting to participate in a race or to continue racing, the competitor disclaims the organizing authority of any liability for damage (material and/or personal injury).

30 TRACKERS

Each boat will be equipped with a tracker that must be used only for the race. It has to be attached on starboard at the back of the boat and free of any obstacle. If you participate to the Pornichet Select, you must keep your tracker onboard, if not, you can give it back at the race headquarters (across from the harbour office) and you will get your deposit back there.

RACE OFFICIALS

Race Committee Chairman: Julien Bothuan 06 31 31 20 18

Event's measurer: Eric Collet

Jury Chairman: François Lozachmeur

Race director: Mathias Louarn-Lallemant 06 81 97 15 41 mathias@lorientgrandlarge.org

APPENDIX « PRESCRIPTIONS OF FFVoile »

FFVoile Prescriptions to RRS 2013-2016
Applying to foreign competitors

RRS 64.3 (*):

The jury may ask the parties to the protest, prior to checking procedures, a deposit covering the cost of checking arising from a protest concerning class rules.

RRS 67 (*):

Any question about or request of damages arising from an incident involving a boat bound by the Racing Rules of Sailing or International Regulation to Prevent Collision at Sea depends on the appropriate courts and will not be dealt by the jury.

RRS 70.5 (*):

In such circumstances, the written approval of the Fédération Française de Voile shall be received before publishing the notice of race and shall be posted on the official notice board during the event.

RRS 78 (*):

The boat's owner or other person in charge shall, under his sole responsibility, make sure moreover that his boat comply with the equipment and security rules required by the laws, by-laws and regulations of the Administration.

RRS 86.3 (*):

An organizing authority wishing to change a rule listed in RRS 86.1 in order to develop or test new rules shall first submit the changes to the FFVoile, in order to obtain its written approval and shall report the results to FFVoile after the event. Such authorization shall be mentioned in the notice of race and in the sailing instructions and shall be posted on the official notice board during the event.

RRS 88 (*):

Prescriptions of the FFVoile shall be neither changed nor deleted in the notice of race and sailing instructions, except for events for which an international jury has been appointed.

In such case, the prescriptions marked with an asterisk (*) shall be neither changed nor deleted in the notice of race and sailing instructions. (The official translation of the prescriptions, downloadable on the FFVoile website www.ffvoile.fr , shall be the only translation used to comply with RRS 90.2(b)).

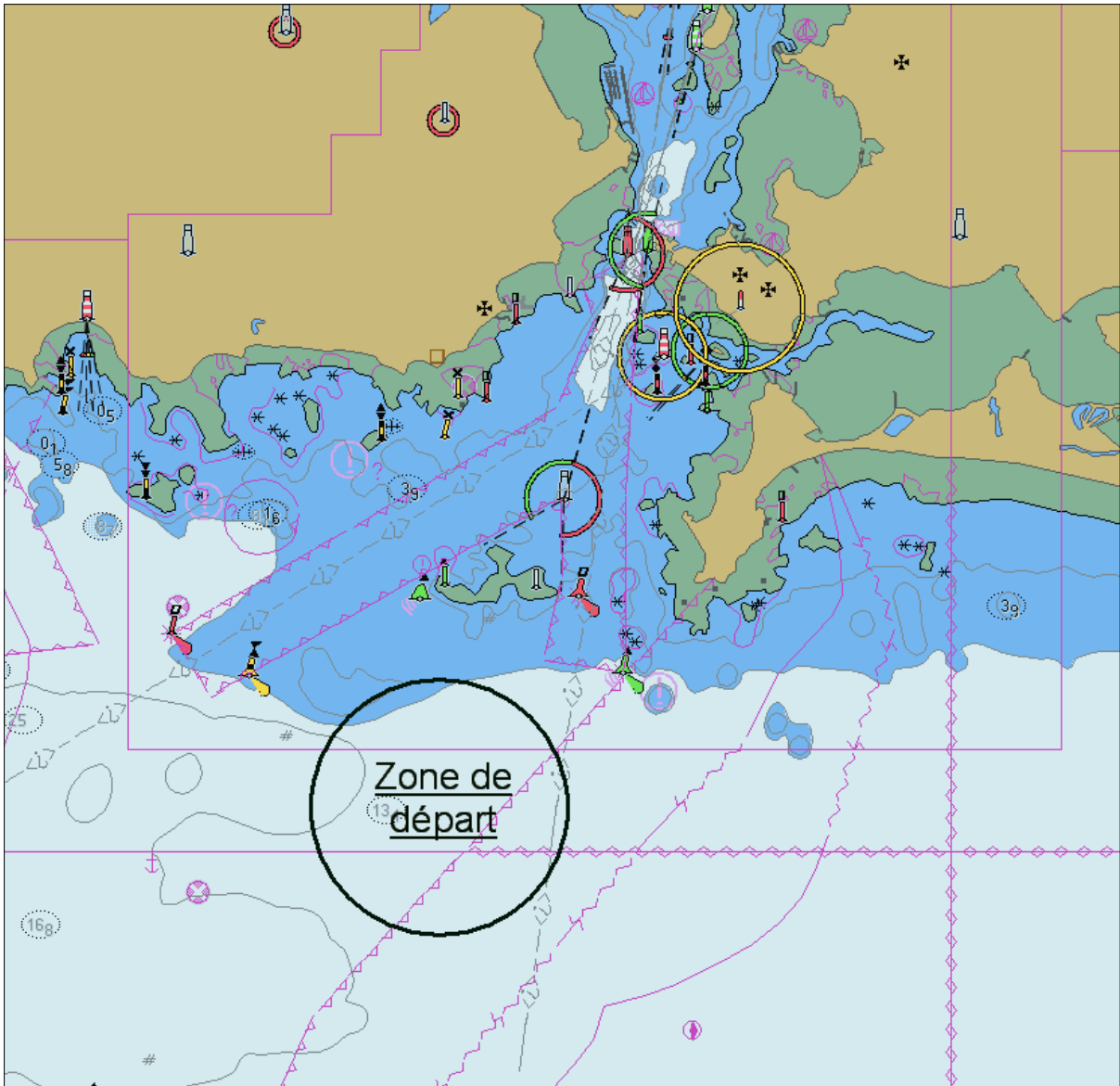
RRS 91 (*):

The appointment of an international jury meeting the requirements of Appendix N is subject to prior written approval of the Fédération Française de Voile. Such notice of approval shall be posted on the official notice board during the event.

APPENDIX R (*):

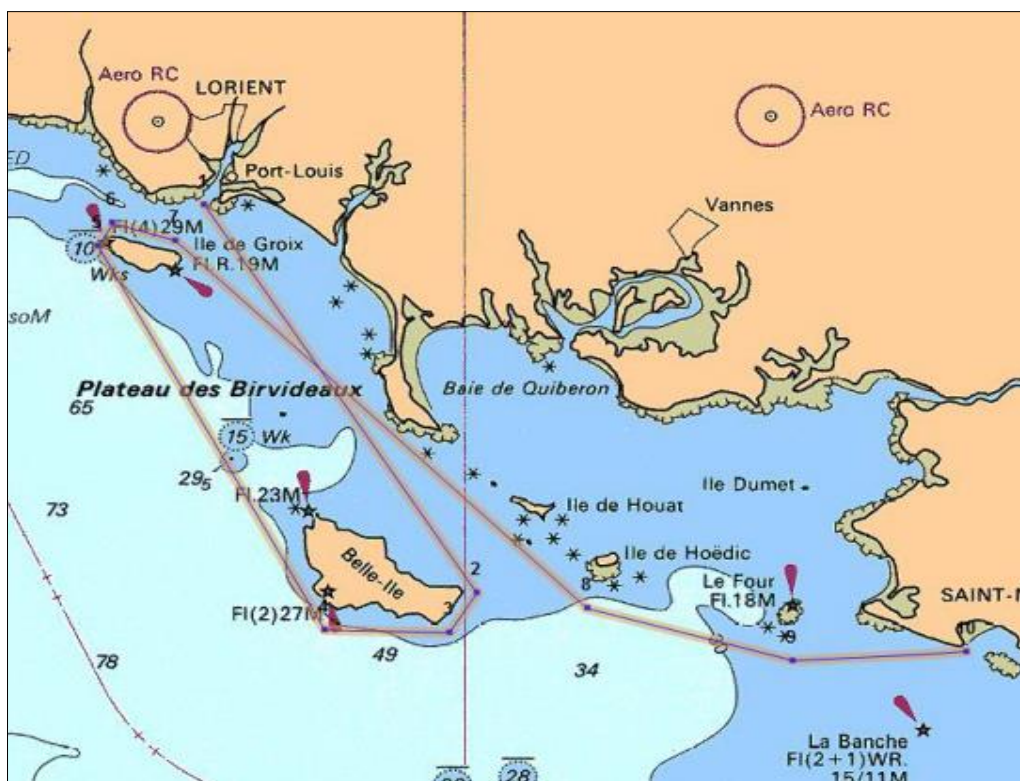
Appeals shall be sent to the head-office of Fédération Française de Voile, 17 rue Henri Bocquillon, 75015 Paris – email: jury.appel@ffvoile.fr

APPENDIX "RACING AREAS"



Departure zone

COURSE 1



COURSE 2

1	Départ Sud des Errants (position 47°40'30N/03°23'20W)		
2	Plateau " LES BIRVIDEAUX"	à laisser à	tribord
3	Cardinale Sud "Goue Vas Sud"	à laisser à	bâbord
Belle Ile et ses dangers à tribord			
4	Cardinale EST "Les Galères"	à laisser à	tribord
5	Cardinale Ouest "Les Poulains"	à laisser à	tribord
6	Plateau " LES BIRVIDEAUX"	à laisser à	tribord
Ile de Groix et ses dangers à tribord			
7	Cardinale Sud "Les Chats"	à laisser à	tribord
8	Pointe de Pen-Men	à laisser à	tribord
9	Cardinale Nord "Basse Méliste"	à laisser à	tribord
10	Cardinale Sud "Goue Vas Sud"	à laisser à	bâbord
11	Danger isolé « le pot de fer »	à laisser à	bâbord
12	Cardinale Sud "le chariot"	à laisser à	bâbord
13	Cardinale "Goué Vas du Four"	à laisser à	bâbord
15	Latérale tribord "Les guérandaises"	à laisser à	tribord
16	Latérale bâbord "Penchateau"	à laisser à	bâbord
17	Latérale tribord "Port de Pomichet"	à laisser à	tribord
18	Arrivée milieu de baie du Pouliguen 47° 15' 40 N/ O 02° 22' 20W		



1	Départ Sud des Errants (position 47°40'30N/03°23'20W)		
2	Cardinale Est « Edouard de Cougy »	à laisser à	tribord
3	Cardinale Sud « les Chats »	à laisser à	tribord
4	Ile de Groix	à laisser à	tribord
5	Cardinale Nord « Les Grands Pourceaux »	à laisser à	bâbord
6	Cardinale Ouest « la Rouge de Glénan »	à laisser à	tribord
7	Cardinale Ouest « les Bluiniers »	à laisser à	bâbord
8	Cardinale Ouest « Basse Pérennès »	à laisser à	bâbord
9	Cardinale Sud « la Jument de Glénan »	à laisser à	bâbord
10	Ile de Groix	à laisser à	tribord
11	Cardinale Nord « Basse Méлите »	à laisser à	tribord
12	Latérale tribord "Les guérandaises"	à laisser à	tribord
13	Latérale bâbord "Penchateau"	à laisser à	bâbord
14	Latérale tribord "Port de Pomichet"	à laisser à	tribord
15	Arrivée milieu de baie du Pouliguen 47° 15' 40 N/ O 02° 22' 20W		